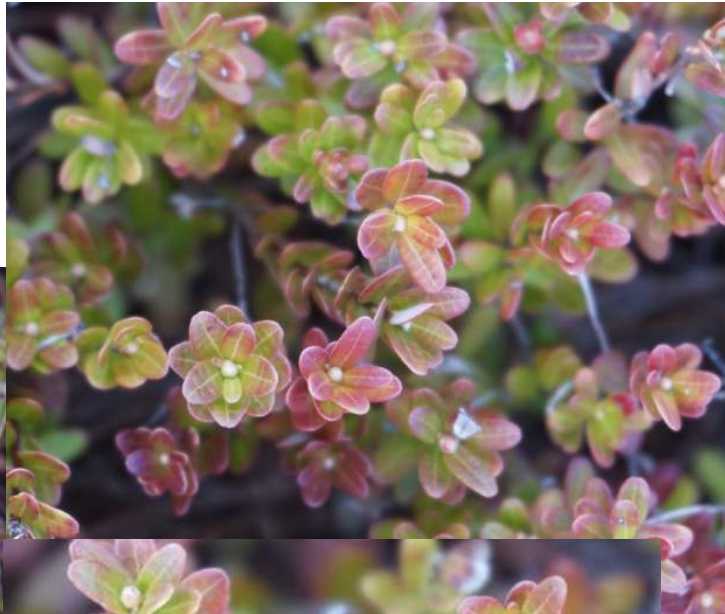


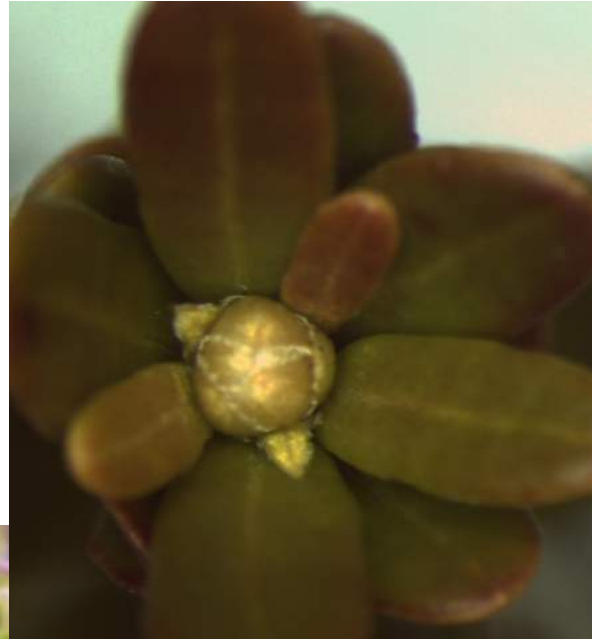
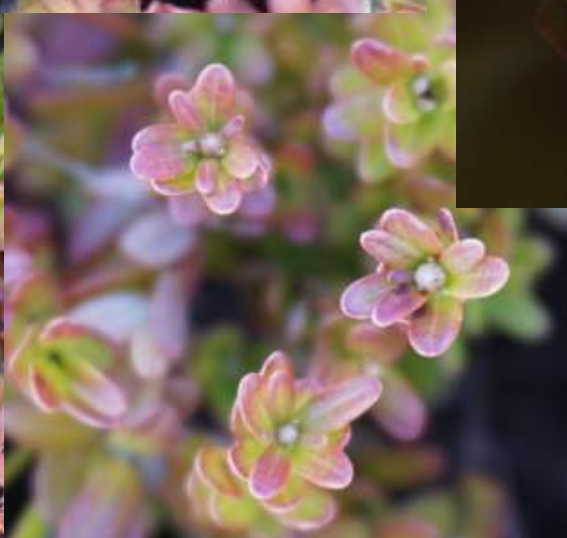
April 27, 2018

- ALWAYS check the tolerance at your bog [tolerance photos for all stages are shown at the end of this file].
- At Rosebrook Bog, Stevens are at White Bud Stage; Ben Lear, Early Black and Howes have reached the Bud Swell Stage. At State Bog, stages for those varieties were similar. New cultivars were similar in appearance to Ben Lear.
- At the White Bud Stage, the buds have lost their dormant red color and appear noticeably white or green, bud scales remain tight. At the Bud Swell Stage, buds have begun to expand/enlarge and bud scales have begun to loosen or separate.
- White Bud Stage tolerance is 22°F for Stevens. Bud Swell Stage tolerances are 22°F for Early Black and Howes; and 25°F for Ben Lear and new hybrids.
- On-bog photos by Erika Saalau Rojas; close-ups by Carolyn DeMoranville.
- Next check is scheduled for May 1st.

Ben Lear
Rosebrook
25°F



Early Black
Rosebrook
22°F



Stevens
Rosebrook
22°F



Howes
Rosebrook
22°F

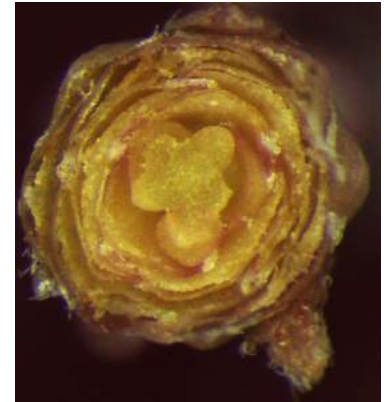
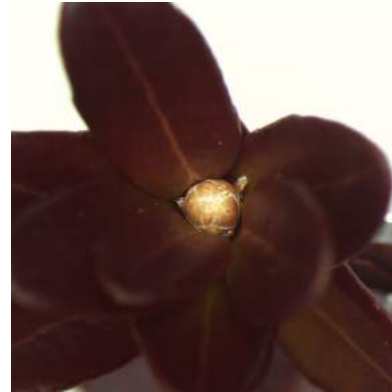


Additional bud photos April 27, 2018 All from State Bog

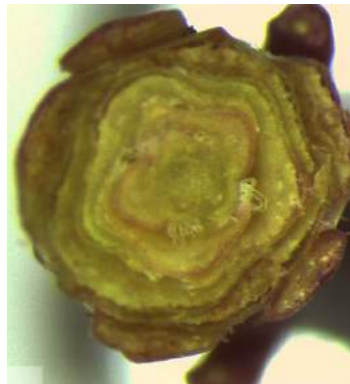
Early Black 22°F (bud swell)



Howes 22°F (bud swell)



Stevens 22°F (white bud)



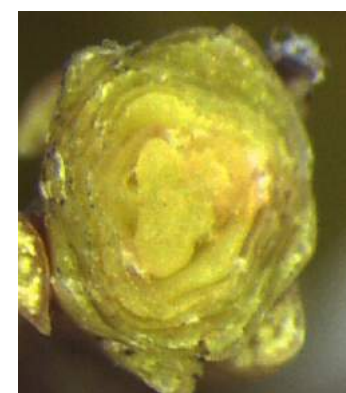
Bud scales on Early Black and Howes buds are loosening, buds have a 'lumpy' appearance. Stevens buds have lightened in color but remain tight.

Additional bud photos from State Bog April 27, 2018 All are at Bud Swell Stage

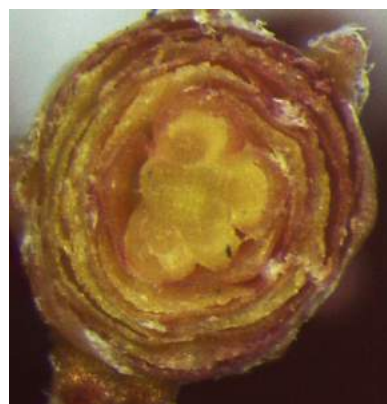
Ben Lear 25°F



Demoranville 25°F



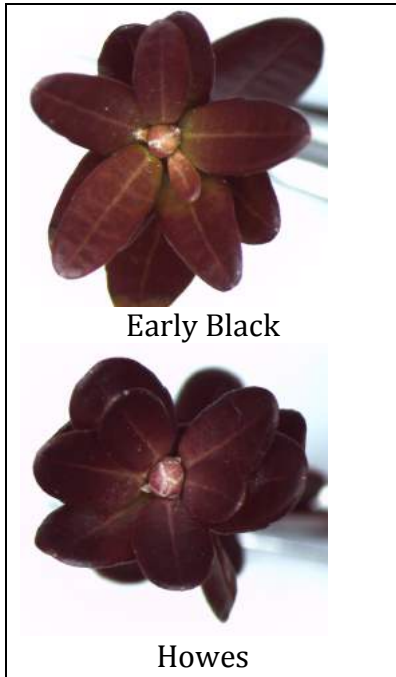
Crimson Queen 25°F



Mullica Queen 25°F



Spring Frost Tolerances - Early Black and Howes



Spring Dormant 18°F



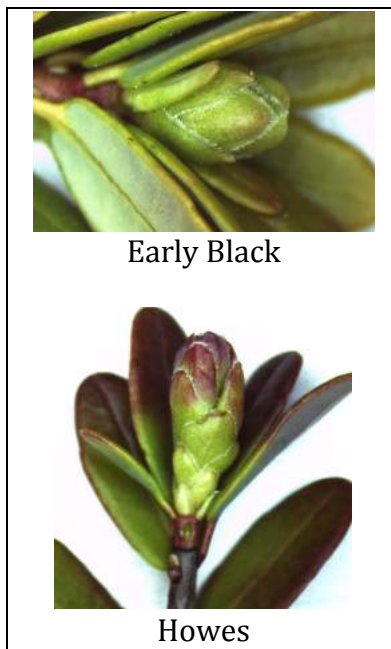
White Bud Stage 20°F



Bud Swell Stage 22°F



Cabbage Head Stage 25°F



Bud Elongation 27°F



29.5°F

Spring Frost Tolerances - Ben Lear and Stevens

Tolerances for large-budded hybrids are assumed to be similar to these. Crimson Queen, Mullica Queen, and Demoranville have been observed to develop in a similar timeline as Ben Lear.

